

This is a printer-friendly summary of the WISPAY website.
For further copies, go to <http://www.wispay.co.uk> and
click "Printer Friendly Version".

[Home](#)

[Company Profile](#)

[Overview](#)

[Functionality](#)

[Technical](#)

[Support](#)

[WisBACS](#)

[Contact Us](#)

Wispay

Payroll

The definitive payroll system

Wisbech Computer Services have been developing payroll software and systems since the mid seventies. The latest 32-bit system is a further example of inventive design benefiting from the expertise gained over the last twenty-eight years.

[Home](#)

[Company Profile](#)

[Overview](#)

[Functionality](#)

[Technical](#)

[Support](#)

[WisBACS](#)

[Contact Us](#)

Wisbech Computer Services was established in 1976 as a software house specialising in Payroll Software. Now, nearly 30 years on, we are still to the forefront of the payroll market with our WISPAY payroll and WisBACS packages.

The mainframe version of WISPAY Payroll was launched in 1978 very closely followed by the "micro" version in 1979. With the advent of PC-DOS and MS-DOS in the early eighties and the subsequent domination of the IBM-compatible, the PC version became the mainstay of our operation. This product went from strength to strength and soon had the functionality of our mainframe product. So much so that we discontinued development of the mainframe system in 1985 to concentrate on PC solutions.

WISPAY is now available as a 32-bit system with any RDBMS database – i.e. MSDE, Microsoft SQL-server, Oracle, DB2, Sybase, etc. It is fully ODBC compliant thus providing links to Excel and a variety of other software.

There is a version of WISPAY payroll software for any size of company. We have users with as few as ten employees to large corporations with over 10,000. WISPAY has been designed for ease of use whilst still retaining security of operation, and is backed up by an unrivalled support service and a policy of continuous development.

**Entry-level system for smaller users.**

WISPAY Lite retains the full-functionality of its stable-mates but is limited to single-user operation.

**Designed for companies with a dedicated payroll department.**

WISPAY Professional has full multi-user capability and is ideal for companies with a payroll department with several staff. It can also provide enquiry facilities to personnel or accounts if required.

**For larger companies, accountants and payroll bureaux.**

WISPAY Enterprise offers all the capability of WISPAY Professional but has the added advantage of handling payrolls for a number of discrete companies. Payroll bureaux, accountants and group organisations with several subsidiaries will benefit from the WISPAY Enterprise payroll software.

The **Wispay Payroll** system comes complete with a comprehensive array of features and functions, including: -

- Unlimited user-defined pay elements.
- Unlimited user-defined deduction elements.
- Handles hourly, weekly, fortnightly, four-weekly, monthly and quarterly pay frequencies.
- Tax Year and Company Year balances.
- Unlimited pay history.
- All periods available – ability to browse across periods.
- All statutory legislation – Tax, NI, SSP, SMP, SPP, SAP, Court Orders, Student Loans and Tax Credits.
- Directors NI.
- Class-1A.
- Multiple-employment NI (Aggregation).
- P14/P60/P35.
- Year-end returns on disk.
- 26 pension Schemes (5 per employee).
- Contracted-out Money Purchase Schemes (COMPS).
- Salary-related Schemes.
- Stakeholder Pensions.
- Unlimited Departmental Structure.
- Departmental and proportional costing.
- Output to Nominal Ledger.
- Report Generator.
- On-screen report preview.
- Notes, Messages & Reminders.
- Data export / import

WISPAY will run under the following operating systems:-

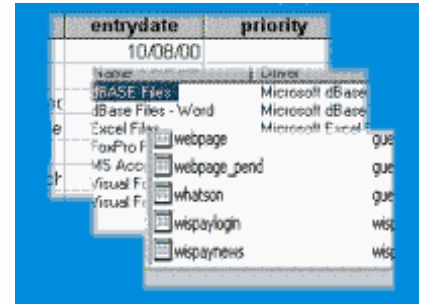
- Windows-98
- Windows-NT
- Windows-2000
- Windows-XP

WISPAY :-

- Is fully ODBC compliant,
- Links to all popular Accounts / T&A / Personnel software,
- Is COM-enabled,
- Is Web based.

Database Support for: -

- MSDE,
- MS SQL Server 7.0, 2000,
- Oracle,
- DB2,
- Sybase,
- Any other ODBC-compliant database.



With an application as sensitive as Payroll, support is as important, if not more so, than the software. It goes without saying that the software does what it is supposed to do and, we think, in a very comprehensive and user-friendly manner. What makes one package stand out from the others is the support that is provided. At **Wisbech Computer Services**, we are committed to providing first-class support. We will give whatever it takes to ensure that you can get your payroll out in good time.

For payroll it is not just support - it's the right support - right now.

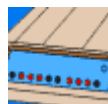
The support that we provide can be split into several areas as detailed below. However, it should be noted that in all cases the above slogan applies. You will always deal with people who can give you the right answers; it is never a case of "I will find out and (maybe) get back to you".



Installation & Training



Unlimited Telephone Helpline



Modem Support



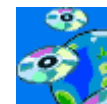
Internet Support



Training



Legislation Changes



New Releases of WISPAY



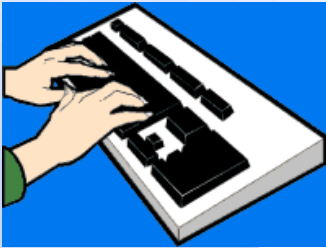
Consultancy & Project Management



Temporary Bureau Service



Emergency Cover

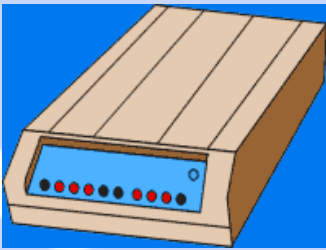


Installation & Training

The amount of support provided will vary according to the size of the payroll and the complexity of the computer system. This can be anything from one day for 20 employees on a stand-alone PC to maybe twenty days for a 10,000-employee payroll on a 25-user system. Initial training is always carried out at the customer's site and is "hands-on" as opposed to classroom training. Payroll specialists cover all payroll aspects although our computer personnel may get involved with the client's network administrators at the start of the bigger installations.

Unlimited Telephone Helpline

Telephone Helpline support is provided from 9:00am to 5:30pm Monday to Friday, with the exception of bank holidays. Cover outside these times is available, at no extra cost, simply by calling the helpline during normal hours and making the necessary arrangements.



Modem Support

Modem support allows our Helpline operatives to provide hands-on support as if we were sitting in your office. This is invaluable in cases where being able to see the problem and to be able to "drive" the client's system gives the edge over having a problem just described.

Internet Support

Internet support can be obtained primarily through our web site, or by e-mail. Our web site features a member's area, which contains documentation, common WISPAY updates, and facilities to allow quick and convenient ordering of stationery. We also offer a password-protected FTP area for software updates relating to your personal configuration of WISPAY.



Training

As well as the initial training, which is held on-site, we also provide a number of training courses at our offices in Wisbech.

- WISPAY for New Payroll Staff,
- WISPAY System Administration (2 days),
- WISPAY Report Generator,
- WISPAY Advanced Report Generator (2 days).

Legislation Changes

Changes in statutory legislation, from a simple change of tax rates to a completely new function (e.g. Student Loans), are provided on CD. The CD will reconfigure the system and all that is required of the user is to insert the CD at the correct point in the payroll cycle.

We will shortly be providing this function, as an option, via the Internet.





New Releases of WISPAY

WISPAY, with its powerful parameter-driven functionality, comes as a fixed package but capable of being adapted to handle whatever is demanded of it. As a fixed package it is also a proven package and you have the satisfaction of knowing that you have a carbon copy of the system that is proving its dependability each week for other users.

Once you are using the system you will never again have to worry about upgrading or purchasing extra programs. We keep it abreast of the times - always able to deal with your latest requirements, the latest changes in statutory legislation and the latest ideas in

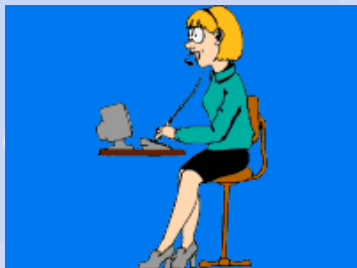
pay policy. You will always be using the latest version of the system - and at no extra cost.

Minor changes are often distributed along with the statutory maintenance but from time to time a new release is provided. This situation normally entails a free-of-charge, on-site visit from our support team. Any conversion programs required will also be provided.

Consultancy/Project Management

We are more than happy to get involved with you whenever it is necessary to implement a new function, such as a new pension scheme or modifications in pay structure. Whilst the system is very easy to configure - our bureau users are doing this all the time - most users have the system set up when it is installed and it never changes. We can reconfigure the system to run in the most efficient manner. Very often, visits such as these highlight facilities in the system that the user could benefit from but didn't know existed.

Installation of the larger systems often involves linking WISPAY with other packages, such as Time & Attendance, Personnel or Accounts. The system may be installed at more than one site and may involve modem links. In these situations we can provide full project management or maybe work in conjunction with your own staff to ensure that everything goes smoothly and timescales are met.



Temporary Bureau Service

Within the Wisbech Computer Services organisation we run a payroll bureau. Apart from giving us a lot of feedback for the development of WISPAY it can provide cover for our users in a number of areas. We are also a fully authorised BACS bureau.

We have provided temporary cover in the following situations:-

- Payroll clerk in hospital,
- Payroll clerk on holiday,
- Payroll clerk on maternity leave,
- Payroll clerk left and no replacement,
- BACS system has "gone down",
- No telephone connection to BACS,
- Computer gone down - today is payday!

Emergency Cover

We can provide contingency arrangements for any emergency situation.

In the very short term we can move your payroll processing to our bureau - assuming you have copies of your data!!! As a precaution against losing your data we can also provide off-site data archiving.

In the longer term we can provide replacement hardware, already configured and loaded with WISPAY.

Fortunately we have never had to cope with any real disasters - a few emergencies, but no fires or floods. If we did, however, you can be assured that when you shout, "Help", help is what you get - the right help, right now.



WisBACS provides a direct link with the banking system for all types of monetary transfer.

WisBACS was designed with ease of use in mind, giving clear visual confirmation of the values being processed. To prevent incorrect transactions **WisBACS** will validate sort codes and account numbers and highlight any discrepancies. Users can also create their own payment files, which may be saved and amended as required. **WisBACS** will import data from all popular payroll and accounting packages.

WisBACS...

- is simple and easy to use.
- can create BACS files "on the fly".
- offers fully automatic recovery of problem transmissions.
- will link to all popular Payroll & Accounts systems.
- supports over 500 Modems.
- provides sort code and account number validation.

There are three versions of **WisBACS** to choose from, depending on your requirements: -



For single BACS users.

WisBACS Lite offers the same functionality as all the **WisBACS** products, but is restricted to a single BACS user number. This means that only one bank account can be used from which to make payments, although there is no limit to the number of accounts into which payments are made. For the majority of users this version is all that is required.



For users with multiple BACS user numbers.

WisBACS Professional gives users the ability to make payments out of more than one bank account by allowing it to handle an unlimited number of BACS user numbers. This is very useful where a centralised payroll department may be processing payroll for different companies within a group.



For BACS bureau users.

WisBACS Bureau offers full bureau facilities including multi-file submissions, multiple queuing and more comprehensive reporting functions.

If you have any further queries relating to WISPAY or WISBACS, or to find out how WISPAY is the solution to your specific payroll needs, you can contact our sales team using the following details: -

Address: -	Wisbech Computer Services Ltd, 107 Norwich Road, Wisbech, Cambridgeshire PE13 2BB
Telephone:-	01945 464146
Fax: -	01945 464680
E-Mail: -	sales@wispay.co.uk
Web-sites: -	http://www.wispay.co.uk http://www.wisbacs.co.uk http://www.wisbech.com